

RESIN SINGLE COMPONENT IN PASTA, COLOURFUL, SPREADABLE, FOR THE DECORATION FROM FLOORS AND WALLS IN ENVIRONMENTS EXTERIORS

Color

the product is NEUTRAL (colorable to the moment with the special colouring pastes)

Consumption medium

0.450 kg/m² (unique hand)

Packages

1 Kg • 5 Kg

PRATIKA LIGHT And a resin in pasta colored, single-component , to granulometry reduced, from use as optional smoothing on PRATIKA In the case in which Yes desires a aesthetic aspect with a minor degree Of porosity, keeping the exclusivity And the aesthetics of the system material.

There composition with precious resins reinforced with microfibre , guarantees high resistance and high pedestrian resistance of the supports covered. Not contains solvents.

Use

PRATIKA LIGHT he comes employee For there shaving Of PRATIKA in way from to donate a degree Of porosity inferior keeping- of-it is the look material, That The regular degree non-slip, in outdoor environments (terraces, balconies, outdoor flooring in general)

Advantages

- Single component
- Easy And fast application
- Free from solvents
- Maintaining both the material aspect and the anti- slip degree

Mode Of use

Quality from the surface

The support (PRACTICE) must result made to perfection, as per the technical data sheet Of reference, deprived Of any residue Of dust or dirt.

Preparation from the surface

The surfaces made with PRACTICE, to dry happened and within 24 hours since the last one application, they will have to to be sanded And dust off with suitable equipment, before proceeding with the installation Of PRACTICE LIGHT.

Preparation of the product

PRÀTIKA LIGHT is available in neutral form and can be coloured with water-based colouring pastes (also from colouring systems). It is recommended to add the colouring pastes in measure of the 3 % on the weight of the product (30 g For 1 kg), coming soon to a maximum of the 5% (max. 50 g For 1 kg) for any color adjustments.

Hold present That there viscosity of the colouring pastes, affects the viscosity of PRÀTIKA LIGHT.

To ensure perfect homogeneity of the colouring, mix thoroughly . through systems Of shaking, or with a mixer equipped with a special impeller.

AND from consider That there coloring by PRÀTIKA LIGHT, if based on products different , on reference folders or on colorimetric systems Of other references, will be able to to differ (more or less significantly) precisely because the look material That belongs to the material and which differentiates its visual effect also as a function of a different index Of reflection from the light.

For ensure a I wait The more Neighbor possible to that desired And it is advisable, if necessary, to carry out a colouring sample.

Hold in taking into account

the fact that, due to its peculiarities a result cannot to result never identical to a reference Of different typology. Also, consider That The product fresh may slightly differ in the tone final based on to various factors which the drying of the material And the coverings Of finish That they will go to apply.

Before Of proceed to the application, packaging carefully with low speed mixer

Application of the material consequently at the Surface preparation

Deposit PRACTICE LIGHT on the surface and apply it using a smooth steel spatula (usually one application is sufficient) in manner homogeneous, until to obtain the desired finish. For obtain the effect That exalts the aesthetic aspect material, vary there direction of the spatula strokes. The consumption minimum And Of about 0.450 kg/ m² in unique hand.

Finishes For PRACTICE LIGHT

Once the coating has dried , spent a period Of at least 24 hours from the last one application (to a temperature Of about 23-25 °C and UR 60- 65 %), carry out sanding with suitable equipment And removal from the powders of processing.

Discs Recommended:

- disc abrasive gr. 120.

(Make sure That the discs used Not release color).

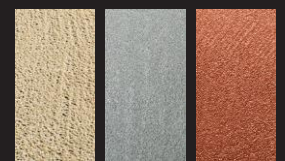
Then proceed with the application in more hands of the coating Of transparent finish expected "K FINISH" (according to the card) technique).

If necessary spent a period at least 48 hours after the last application of PRACTICE LIGHT, And possible finish the transparent solvent-based finishing coatings called NAIRETAN 200 Polyurethane/G Transparent or Nairetan Pool Finitura Transparent (second relative form technique).

PRÀTIKA
light



K Finish



Data Technicians

PARAMETER	VALUE
I wait	Pasta thixotropic, single component
Color	the product is NEUTRAL (can be coloured on the spot with the appropriate colouring pastes)
Weight specific UNI EN ISO 2811- 1	1.55 ± 0.050 gr/mS
Granulometer	< 0.3 mm
Temperature Of application	+ 5°C + 30°C
Time Of drying to the touch Temp. 25°C – RH 60%	2 hours about
Full maturation Temp. 25°C – UR 60%	48 hours about
Consumption medium	0.450 kg/m ² (unique hand)
Class Of resistance at the slipping, DIN 51130:03	With finish K Finish R10 (14.5°) With K Finish R10 finish (18°) And additive anti-slip
Conservation	12 months to temperature included Between + 5th And +30°C away from direct sunlight, heat sources and frost.

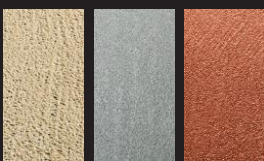
Determination of the footprint at the compression

Cemensheath army with MAT 225 coated with PRACTICE And PRACTICE LIGHT			
Phase Of load		Phase Of I unload	
Pressure kPa	Yield mm	Pressure kPa	Yield mm
1000	0.175	6000	0.445
2000	0.249	5000	0.444
3000	0.305	4000	0.440
4000	0.348	3000	0.432
5000	0.395	2000	0.418
6000	0.419	1000	0.393
7000	0.446	0	0.303

PRACTICE army with PV 160 finished with PRACTICE LIGHT			
Phase Of load		Phase Of I unload	
Pressure kPa	Yield mm	Pressure kPa	Yield mm
1000	0.135	6000	0.439
2000	0.206	5000	0.437
3000	0.266	4000	0.433
4000	0.317	3000	0.420
5000	0.363	2000	0.402
6000	0.405	1000	0.375
7000	0.443	0	0.292

Packages

1 Kg • 5 Kg



Warnings

Product optional Of finishing For PRÀTIKA. Do not add water or other substances beyond the permitted colorants, the product And ready for use .

Respect the temperatures Of application indicate.

The drying of the product varies according to the temperature and humidity level. environmental.

After the use, in case Of remainder of material, place the nylon in contact with the product For avoid it the hardening and close again perfectly there package. Keep there packaging in upright position , pay maximum attention not to to turn upside down there same

Not apply on surfaces wet, frozen or in forecasts of these in the following 12 hours; in case Of fog persistent ; Avoid stagnation Of waterfall on the surface of the coating between the layers until it has completely hardened. During installation, consider That a high badger Of humid- ita slow down the drying of the product and that rain, high badger Of dew or further precipitation may wash away the product if Not dry. PRACTICE LIGHT And a covering Of finish, Not go therefore considered as product waterproofing. In case Of need Of waterproofing preventive, this go performed- followed with Cemenguaina (Naici) armed with MAT225 or TEX- CORE glass fibre 130, second specific technical data sheet and the indications above. Check Always the last one version update of the technical data sheet (www.resinamaterica.com).

Voice Of specifications

microfibre, coloured paste resin called “ PRÀTIKA LIGHT ” (Naici) to be applied on wall and floor coverings made with PRÀTIKA (Naici) which give a degree of lower porosity while maintaining the exclusive aesthetic impact with a material effect, for environments interiors to use civil which dwellings , offices, shops, showroom, hotel, etc.. The application it happens to spatula of steel, in unique hand For a consume medium total Of approx. 0.450 kg/m². The finish consists of in the application in more hands of the coating transparent protective “ K FINISH ” second cards reference techniques .

PRÀTIKA[®]
light